

Name _____



TEKS Number and
Operations—K.3.B

MATHEMATICAL PROCESSES
K.1.E

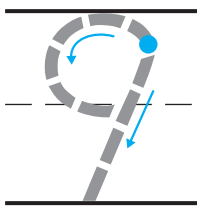
14.3 Differences Within 10



Essential Question

How can you show differences within 10?

Explore



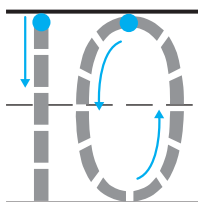
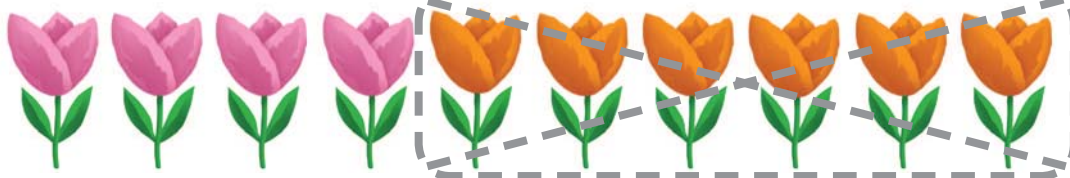
— — — —

— — — —
— — — —

DIRECTIONS There are nine flowers. Four flowers are purple. Trace the circle and X around those flowers. The rest of the flowers are yellow. How many flowers are yellow? Trace and write to complete the subtraction sentence.

Share and Show

1

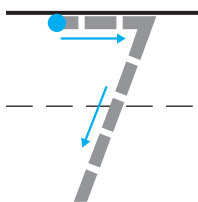
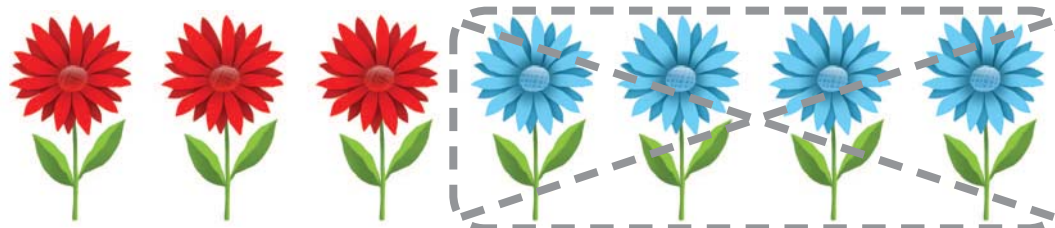


— — —

— — — — —

— — — — —

2

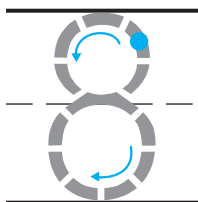
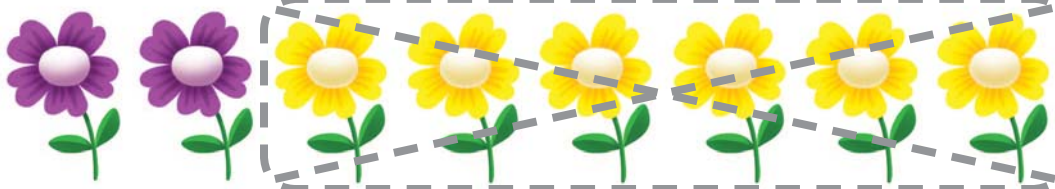


— — —

— — — — —

— — — — —

3



— — —

— — — — —

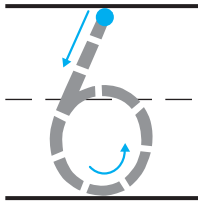
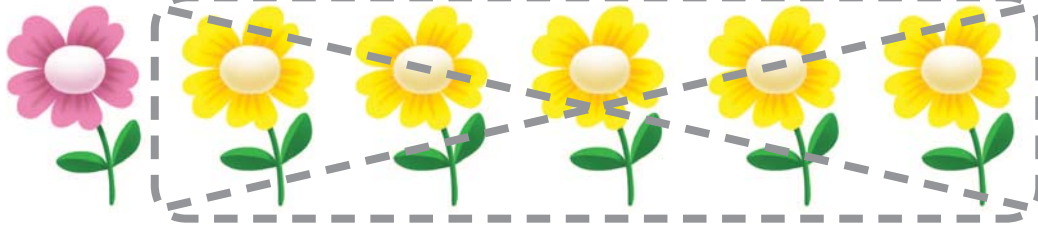
— — — — —

DIRECTIONS 1. Listen to the subtraction word problem. There are ten flowers. Six of the flowers are orange. The rest are pink. Trace the circle and X. How many flowers are pink? Trace and write to complete the subtraction sentence. 2-3. Listen to the subtraction word problem. Trace and write to complete the subtraction sentence.

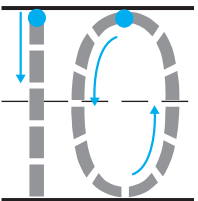
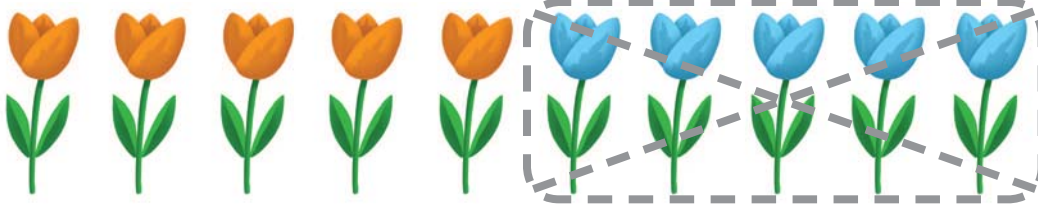
482 four hundred eighty-two

Name _____

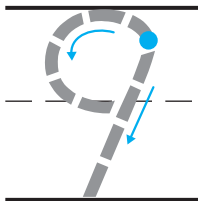
4



5



6



DIRECTIONS 4–6. Listen to the subtraction word problem.
Trace and write to complete the subtraction sentence.

**Problem Solving**

7



$$10 - 1 = \underline{\hspace{2cm}}$$
$$\hspace{10em} \underline{\hspace{2cm}}$$
$$\hspace{10em} \underline{\hspace{2cm}}$$

Daily Assessment Task

8

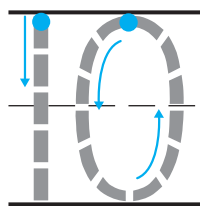
☐ 2☐ 3

DIRECTIONS 7. Complete the subtraction sentence. Draw to show what you know about this subtraction sentence. Tell a friend about your drawing. 8. Choose the correct answer. There are nine flowers. Seven flowers are pink. The rest are yellow. What is $9 - 7$?



Name _____

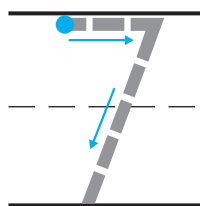
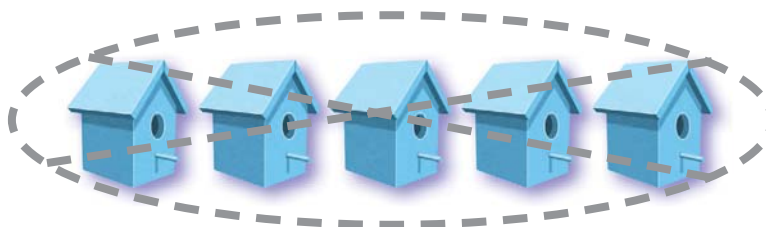
14.3 Differences Within 10



— — —

— — — — —

— — — — —



— — —

— — — — —

— — — — —

DIRECTIONS Trace and write to complete the subtraction sentence. **1.** There are ten flowerpots. How many flowerpots are green? **2.** There are seven birdhouses. How many birdhouses are red?

3



☐ 6

☐ 8

4



☐ 6

☐ 4

5



☐ 6

☐ 4

DIRECTIONS Choose the correct answer.
3. There are 10 pinwheels. Two of them are yellow. What is $10 - 2$? **4.** There are eight baskets. Four of them are blue. What is $8 - 4$? **5.** There are 9 flowers. Three are red. The rest are yellow. What is $9 - 3$?